



MONTHLY MEMBERSHIP PROGRESS REPORT

District 325B1

Results as of: 03/31/2018

GMT: KHAGENDRA SITAULA

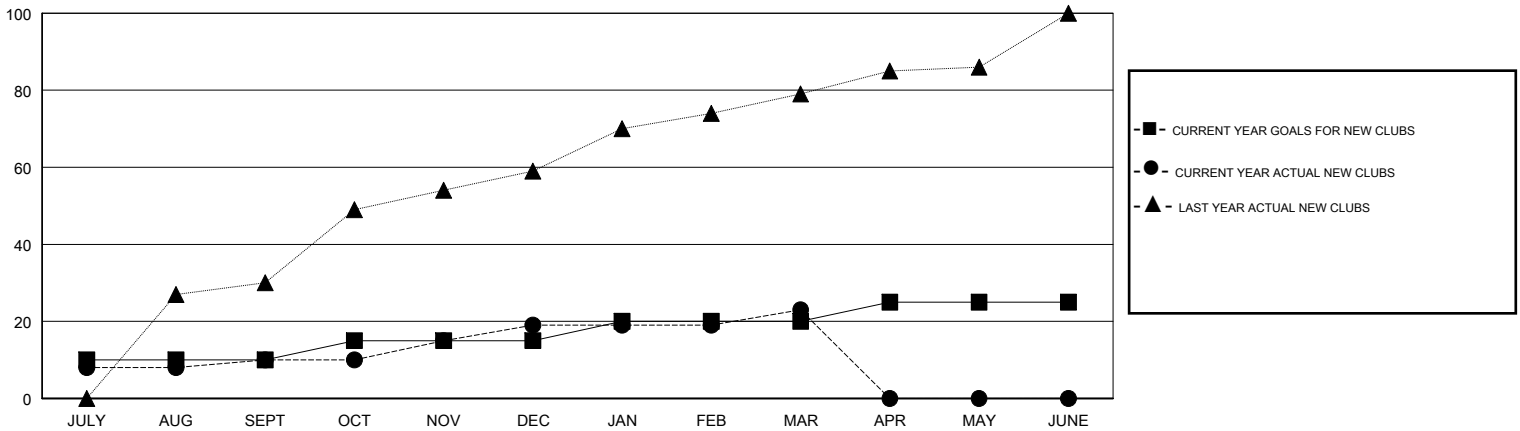
LOCATION NEPAL

GMT CA

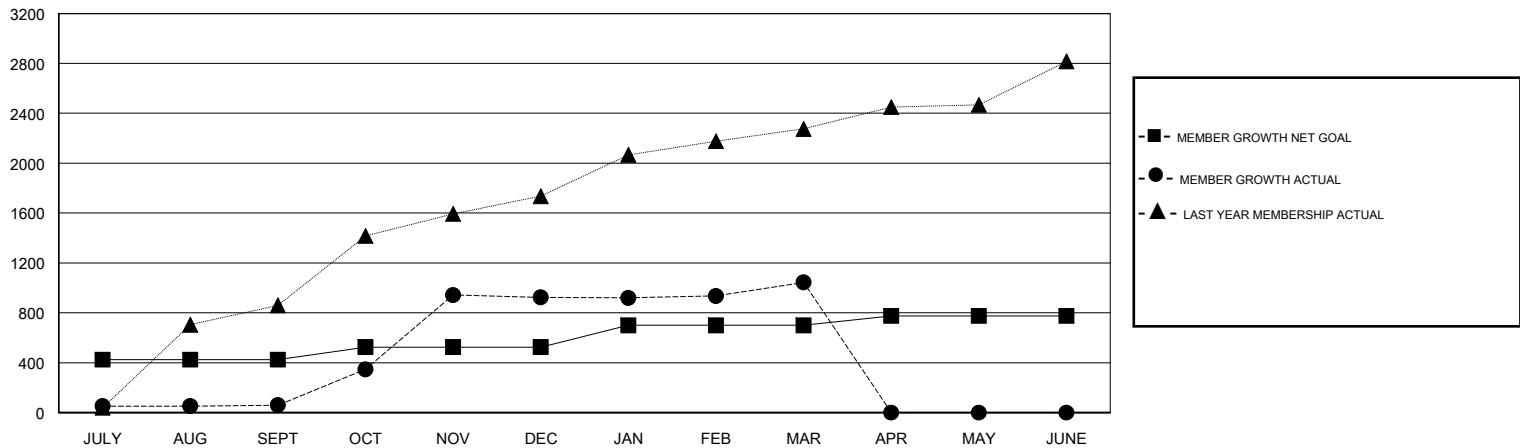
Clubs			
RESULTS FOR 2017-2018			
QUARTER	NEW CLUB GOAL	NEW CLUBS	DROPPED CLUBS
JULY/AUG/SEPT	10	10	0
OCT/NOV/DEC	5	9	0
JAN/FEB/MAR	5	4	1
APR/MAY/JUNE	5	0	0

Members			
RESULTS FOR 2017-2018			
QUARTER	MEMBER GROWTH NET GOAL	MEMBER GROWTH ACTUAL	DROPPED MEMBERS ACTUAL (including transfers)
JULY/AUG/SEPT	425	492	413
OCT/NOV/DEC	100	1,293	348
JAN/FEB/MAR	175	322	196
APR/MAY/JUNE	75	0	0

GOALS AND ACTUAL NEW CLUBS CUMULATIVE



GOALS AND ACTUAL MEMBERS CUMULATIVE



DROPPED CLUBS: 1	222 CLUBS OF 333 ADDED 1 OR MORE NEW MEMBERS	<u>GENDER DISTRIBUTION</u>	
DROPPED MEMBERS		MALE	7,958 (75.68%)
DECEASED	7	FEMALE	2,558 (24.32%)
CLUB CANCELLED	8	Women Percentage Fiscal Year Goal: 22%	
OTHER	942	TOTAL FAMILY UNIT MEMBERS	5,289
TOTAL	957	FAMILY MEMBERS PAYING HALF DUES	3,249

[CLICK HERE FOR CUMULATIVE MEMBERSHIP DATA](#)